



# E-INDUSTRIES



EAST is a joint stock company that provides local and regional markets with engineering related products services. EAST started long ago rooting from a family-owned business that was active in construction and roads building. Today the company is active in major infrastructure, energy and industrial sectors. It features a diversity of applications through its divisions, its activities ranges from simple supply of equipment up to a complete complex EPC projects. EAST includes three main sectors E-Roads, E-Rails & E-Industries

# E-INDUSTRIES

## E-ROADS



## E-RAIL



For 20 Years & More we've been and still providing solutions that are tackling our partners' core needs. From process design, equipment selections, manufacturing and supply, process Automation, electrification and energy management, erection, commissioning and start-up, training, operation. We have core knowledge in a very vast and diversified engineering related industries that can encourage us to say. Beside the technologies we provide, we are also serving industries:

Cement, Power Generation & Energy, Fertilizers, Oil & Gas, Water & Waste Water, Food & Beverage, Pharma and Chemical & Petro-Chemical.



**E-INDUSTRIES**

# CONTENT

- 01 Drives & Motors
- 02 Integration of power control systems
- 03 CGA (Continuous Gas Analyzer) Applications
- 04 Electro-Mechanical & Contracting Activities
- 05 Inspection Systems
- 06 Weighing Applications
- 07 Batching Applications
- 08 Crane Applications
- 09 Services & Calibrations

Cement Industry

Drive system upgrade

Plant 2 Kiln 2 main Drives Upgrade Supply, install, commission and startup of frequency converters for Kiln II main motors based upon master follower application:

- ⚙️ Design and implementation of new DC Drives System based on Master Follower application for Kiln Motors.
- ⚙️ Supply, installation, commissioning & start-up of ABB DC Drives (2500 Amp), breakers, bender relays, PLC based system, instruments, Camille Bauer power meters and video-graphic recorders.

Drive system upgrade

EP Fans System

Design, supply, erection and commissioning of a complete, safe and reliable electrical AC System for the EP Fans instead of the already existing DC System.

- ⚙️ Dismantling the old DC system “Motors, drives, transformer and all related power cables”
- ⚙️ Supply and installation of AC motors, drives and transformers
- ⚙️ Cable lying



Fertilizers Industry

Replacement MV motor Cameron compressor unit

Complete Engineering supply, alignment and commissioning for replacement of three phase MV motor (11 kV, 3.5 MW, 3000 rpm) completely with vibration analysis, adaptation and mechanical modification .





## Integration Of Power & Control Systems

### Oil & Gas Industry

#### DCS for Crude Distiller NO.1 sec A

Revamping the existing Yokogawa DCS System, which was working as a backup system for an existing control panel of single loop standalone conventional controllers, indicators, recorders, multi point temperature indicators; o/p change over switches, alarm annunciators ... etc. The executed system is a fully redundant 1:1 system, based on ABB 800xA DCS, including:

- Design of the new DCS system with redundancy SCADA System
- Field Instruments and calibrator supply and installation, System Network, Field instruments.
- Panel building of the new system
- Operator and engineering workstations including Screens development
- Installation, commissioning & Startup



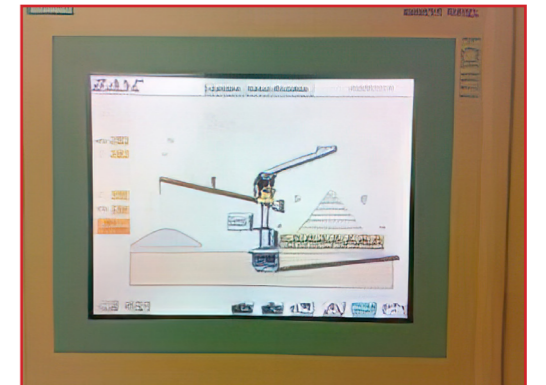
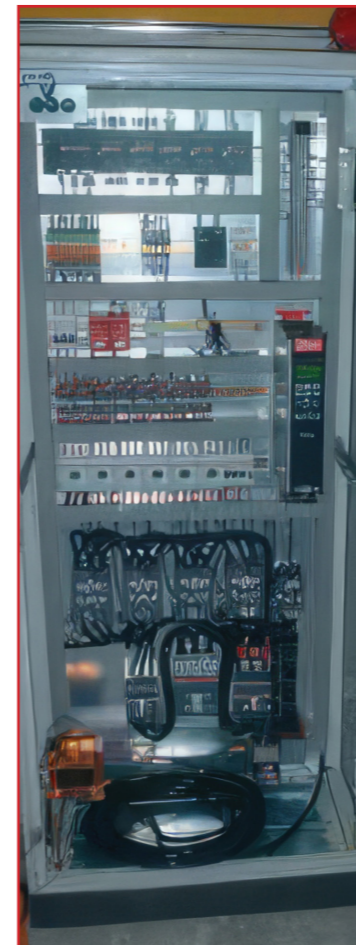
## Integration Of Power & Control Systems

### Cement Industry

#### Upgrade of Limestone circular type Stacker & Reclaimer

Upgrade of Limestone circular type Stacker and Reclaimer Upgrade of the Additives Stacker control system from April PLC system to S7-300 PLC in addition to operator Touch Screen TP270.

- Adding signal cards to the local S7-300 PLC Based Panel and modifying the Simatic Step7 application program
- Motors' starting panels based on ABB ACS800 VFD, ABB soft starter & ABB component for DOL starting circuits.
- Modifying the ABB 800xA DCS system in the CCR to include the new signals Step 7 application program.
- Power and control cables lying
- Modifying the ABB 800xA DCS system in the CCR to include the new signals
- Commissioning & startup



## CEMS (Continuous Emission Monitoring System)

### Cold Dry Technology

#### Power generation Plant

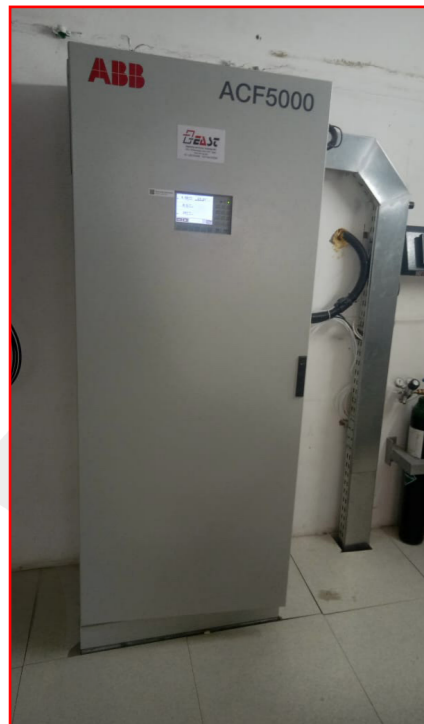
- Design, supply, install, startup & commissioning of two CEMS to be installed on 6 stacks in power plant system includes gas analyzer, dust & physical properties sensors.
- Fully communicated with EEAA server and main fire station control room
- Installing & programming of data acquisition (HMI & DaaS)
- Supply & install heated sample line, sampling controlling system, sample gas pump for 4 stacks.
- Supply & install of physical properties measuring devices (Flow, Temperature and Pressure) using PCME STACKFLOW 200.
- Rehabilitation of 3 old shelters with new firefighting and A/C systems
- Supply & install of dust monitor system (Light Scattering Technology).



### FTIR Technology

#### Glass Industry

Kiln main stack Measured gases: CO NH3 HCL SO2 CO2 NO2 O2



## Process Control

### Cement Industry

**System Function:**  
Cement plants need reliable online analysis of the process gasses at the kiln inlet.



### Safety

Reliable gas analysis for pet coke silo application





## Electro-Mechanical & Contracting Activities

### FMCG Industry

#### Supervision For Fabric Home Care

- Supervision and consultancy for Fabric Home Care Acting as consultant for one year for the Project executed by main contractor for the complete electrical installation of the plant, including rewiring of all control panels to be adapted to the line modification.

#### Product Line Transportation

- Electrical and mechanical dismantling and installation of PET line; including
  - ⦿ Handling the electrical panel mobilization from the original location till place of installation in the new location
  - ⦿ Handling the fixation of the electrical panels on site
  - ⦿ Conducting all electrical related activities from Cable risers, trays, cable pulling and connection on both sides.
  - ⦿ Maintenance of all electric cabinets, dismantling and erection of main cables Mechanical.
- Old Line
  - ⦿ Disassembly of single machines
  - ⦿ Preparation for mobilization
  - ⦿ Unloading on the new location
  - ⦿ Installation and assembling of machines
  - ⦿ Piping connection

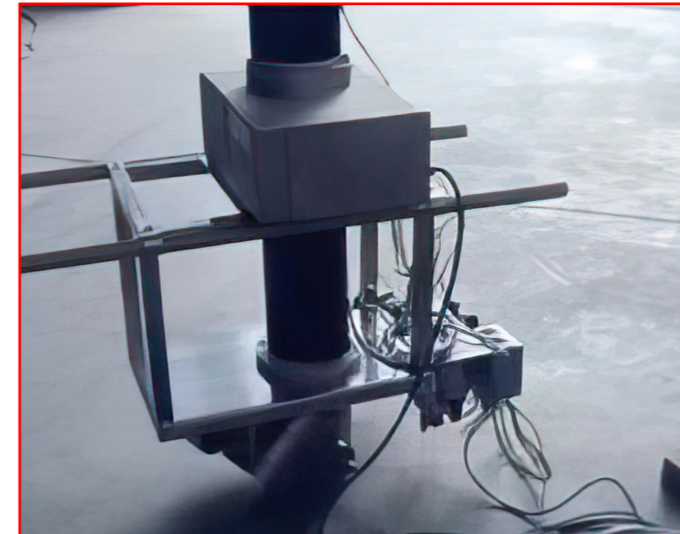


## Inspection Systems

### FMCG Industry

#### Foreign bodies detection for product recipe

- Supply and installation of Vistus freefall pipeline type metal detector for food product line.
  - ⦿ Design and implementation for tailored MD frame.
  - ⦿ Calibration, testing and startup.



### Cement industry

#### Metal Detecting for Coal Long Belt

- Supply, installation, commissioning and start-up for metal detector for coal long belt complete with sunshade optimum operation of Metal Detector (Search-width 800 mm and aperture Height: 400 mm, aperture width: 1096) With the implementation of sand bag markers to mark metal contamination in bulk material. After occurrence of a metal detection a sand bag will be dropped on the product and the belt will be stopped simultaneously, the position of the sand bag simplifying the tracing of the tramp.







## Weighing Applications

### Food & Beverage Industry

#### Tank Weighing System

Implementing a reliable weighing system for a set of Silos with agitator motor. Support Frame installed underneath the Tanks, load cells were installed, the weighing indicator also installed displaying the results after system calibration.



## Weighing Applications

### Chemicals Industry

#### Tank Weighing System

Tanks weighing system Supply and commissioning of 6 Minebea-Intec tank Weighing system each 200 Tons complete with load Cell, mounting kits, weighing transmitters.



### Chemicals Industry

#### Truck Scale

Truck Scale Design and implementation of Two 100 ton pit type truck scale, including civil, mechanical & Electrical works. Weighing components are from Minebea-Intec.



### FMCG

#### Checkweigher

Supply, installation, commissioning and startup of 3 Checkweighers WS 30 For detergents packed inside a carbon box (500\*300\*500) of weighing range from 0 to 30 Kg and belt width 400 mm. With Evaluation electronics EWL 3010 and EWK 2000 plus for the operation and parameterization of the weighing system and for the display and evaluation of the weight values to be used in complete checking. Unilever Mashreq (Home Care Factory).



## Chemical industry

### Batch Weighing System

Supply, installation, commissioning & startup of batch weighing system which consists of:

- ⊗ Steel weighing platforms
- ⊗ Stainless steel shear beam load cells
- ⊗ Load cell mounting foot, stainless steel
- ⊗ Weighing controller with batch weighing software

### Kiln Batching Plant

Design and implementation of Kiln batching plant, including MCC, PLC based control system (S7-300) & weighing system (load cells, mounting kits, cable junction boxes & PROFIBUS Transmitters)



## Food & Beverage Industry

### Overhead Crane

Overhead Crane Control System Upgrade Design and implementation of tower crane electrical package upgrade, package includes:

- ⊗ Supply, installation, commissioning & startup of ABB AC drives, ACS800 series & AC special Motor for Hoist motion, Slow motion & trolley
- ⊗ Local assembly of the drive modules into cabinets complete with all the required drive.



### Tower Crane



## Cement Industry

EAST has an experienced services team by which we can support you in the following services:

Install, Commissioning, Startup, Services and Spare Parts for :

- Motors
- Variable Speed Drives (VSD)

Install, Calibration, Commissioning, Startup, Services and Spare Parts for:

- Metal Detectors
- Check Weighers
- X-rays Inspection Systems
- Batching Systems
- Tank Weighing Systems
- Weighbridges

Install, Commissioning, Startup, Gases Services and Spare Parts for:

- Gas Analyzers
- Dust Monitoring Systems.
- Physical Properties Measurement Systems



### Egypt

30 St. 276 New Maadi,  
Cario 11742 - Egypt.  
TEL(+20) 2 251933 83  
FAX(+20) 2 251933 81

### EAST Engineering Competence Center (EECC)

Plots L21 & L19 , (IDG) ,6<sup>th</sup> of October,  
Giza, Egypt  
TEL( +20 ) 2 38642388  
FAX( +20 ) 2 2519 3381



# PRODUCTS