

## ● Characteristics

0620 - LOAD MEASURING - FORCE - OVERLOAD

### IO-Link



- Input:	Load suspension device
- Function load cell:	Tension / Compression / Tension and compression
- Measuring range:	500 kg / 1000 kg / 1500 kg / 3000 kg
- Output:	IO-Link interface
- Voltage supply:	24 VDC
- Accuracy:	See technical data
- Protection class:	IP54
- Vibration protection:	Electronics completely potted
- Configuration:	per software (IO-Link)
- Material load cell:	Stainless steel / Tool steel nickel-plated
- Accessories:	Rod ends

## ● Technical Data

### Input

Load suspension device: Tension load, compression load, tension and compression load  
 (Strain gauge full bridge)  
 Ranges: 500 kg / 1000 kg / 1500 kg / 3000 kg

### Output

Interface: IO-Link  
 Signal level: 0/24V (as per IO-Link specification)

### Performance Parameters

Measurement amplifier: Accuracy: max. 0,05% of range + sensor error  
 Resolution: 16 Bit  
 Filter adjustment: 0...5 s  
 Switch-on delay: <5 s  
 Response time: 20 ms  
 Configuration: via software (IO-Link)

### Load Cell Specifications

Material: Stainless steel / Tool steel nickel-plated  
 Hysteresis: 0,5% of range  
 Repeatability: 0,05% of range  
 Creepage: 0,05% of range / 10 min  
 Temperature drift on zero: 0,05% of range / 10 K  
 Temperature drift on span: 0,05% of range / 10 K  
 Safe overload: 150% of range  
 Ultimate load: 200% of range

## ● Applications

The load cell with integrated measuring amplifier IO-Link is for use in applications where dynamic forces have to be measured. Possible are tension, compression and tension / compression loads. The output signal has a signal level of 24 V (IO-Link specification). The load cells are available with rod ends.

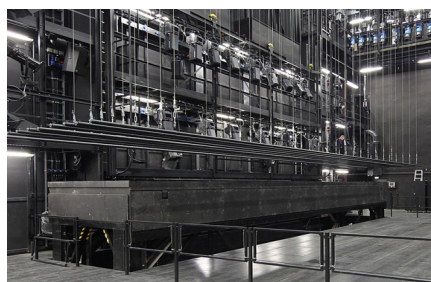
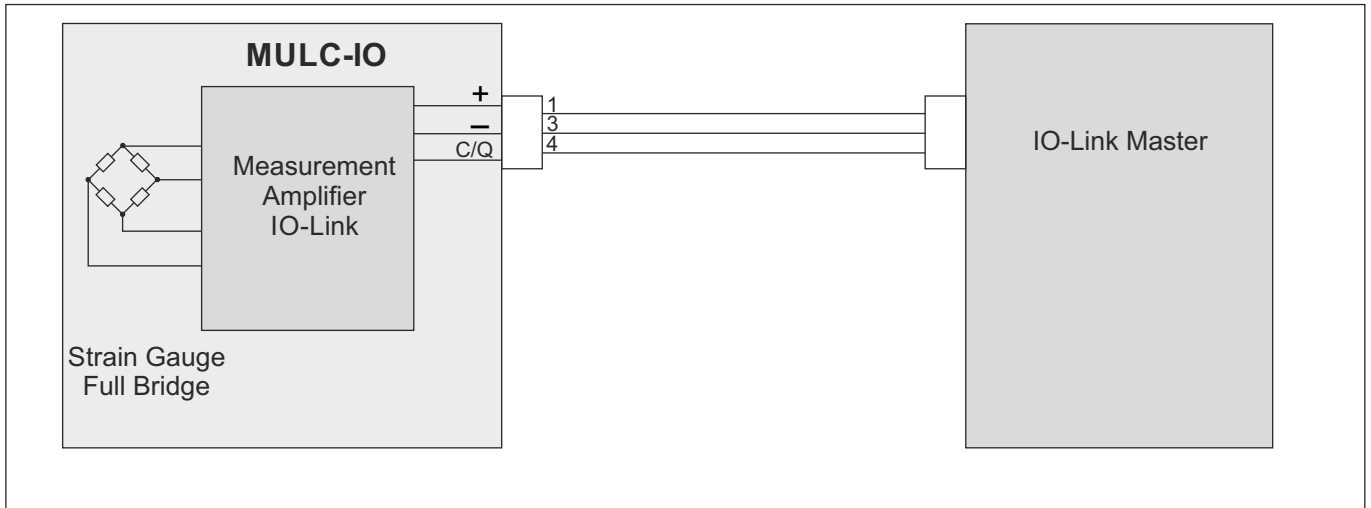


photo: www.pixelquelle.de

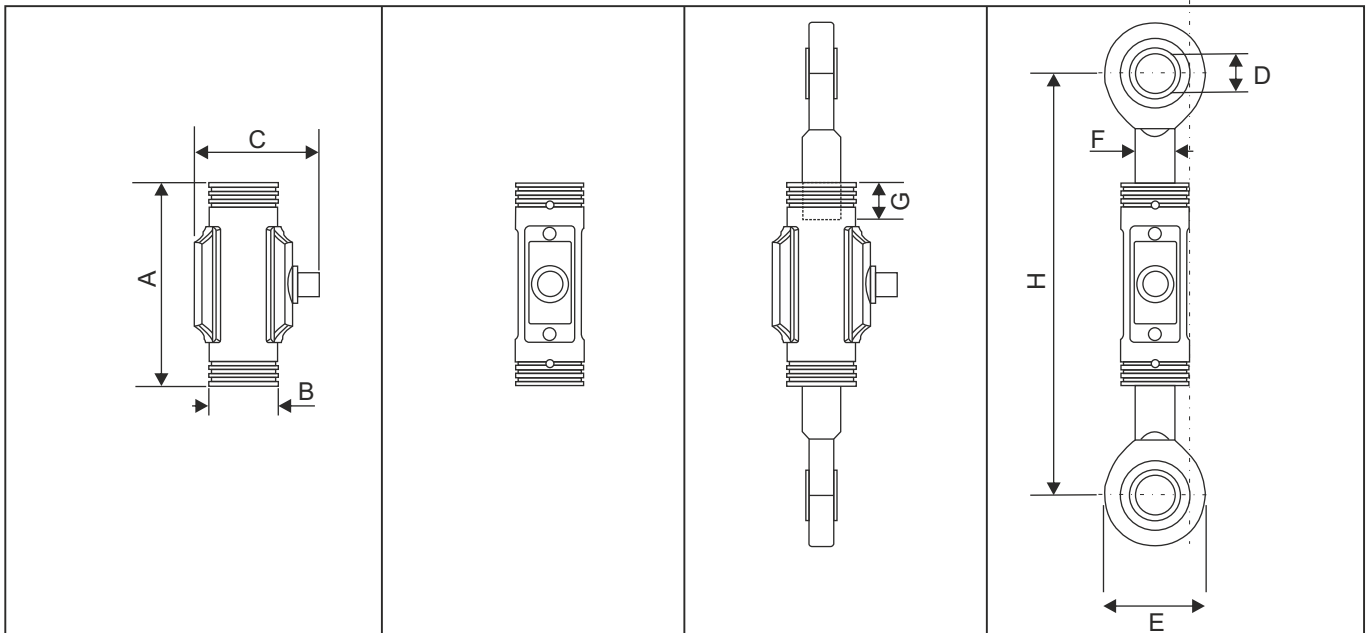


● **Electrical Connection**

**IO-Link Connection with Plug M12x1 (4-pole)**



● **Dimensions (in mm)**



Range	A	B	C	D	E	F	G	H
1000 kg*	90	Ø35	64	Ø12	34	M16	18	168
1500 kg	90	Ø35	64	Ø17	34	M16	17	198
3000 kg	105	Ø35	64	Ø20	53	M20x1,5	23	218

\*Dimensions 500 kg = dimensions 1000 kg

● **Order Code**

**C H X X X X X X - X X X X**

<b>Function load cell:</b>	Tension load Compression load Tension- and compression load	A B C																	
<b>Output:</b>	IO-Link (24 VDC)		0																
<b>Supply:</b>	24 VDC			0															
<b>Vibration resistance:</b>	Yes (inside potted)				1														
<b>Range load cell:</b>	500 kg 1000 kg 1500 kg 3000 kg									0 1 2 3									
<b>Material load cell:</b>	stainless steel tool steel nickel-plated										0 1								
<b>Mounting device:</b>	rod ends without (The operator uses the threaded holes of the load cell.)											0 1							
<b>Electrical connection:</b>	M12x1, 4-pole																		1
<b>Configuration:</b>	without factory setting customized (please specify)																		0 1 2
<b>Special model:</b>	No Yes (please specify)																		0 1